

# PROLITEC

PERFECTLY SCENTED ENVIRONMENTS

## 290TT Assembly Instructions

Rev. 2026-02-26

### PARTS NEEDED

- Stand
- Stand Pad
- Label, AQ290 Rating
- Nut for DC Jack
- (x2) – Screw, 6-32
- (x4) – Nut, 6-32
- Extension Cable

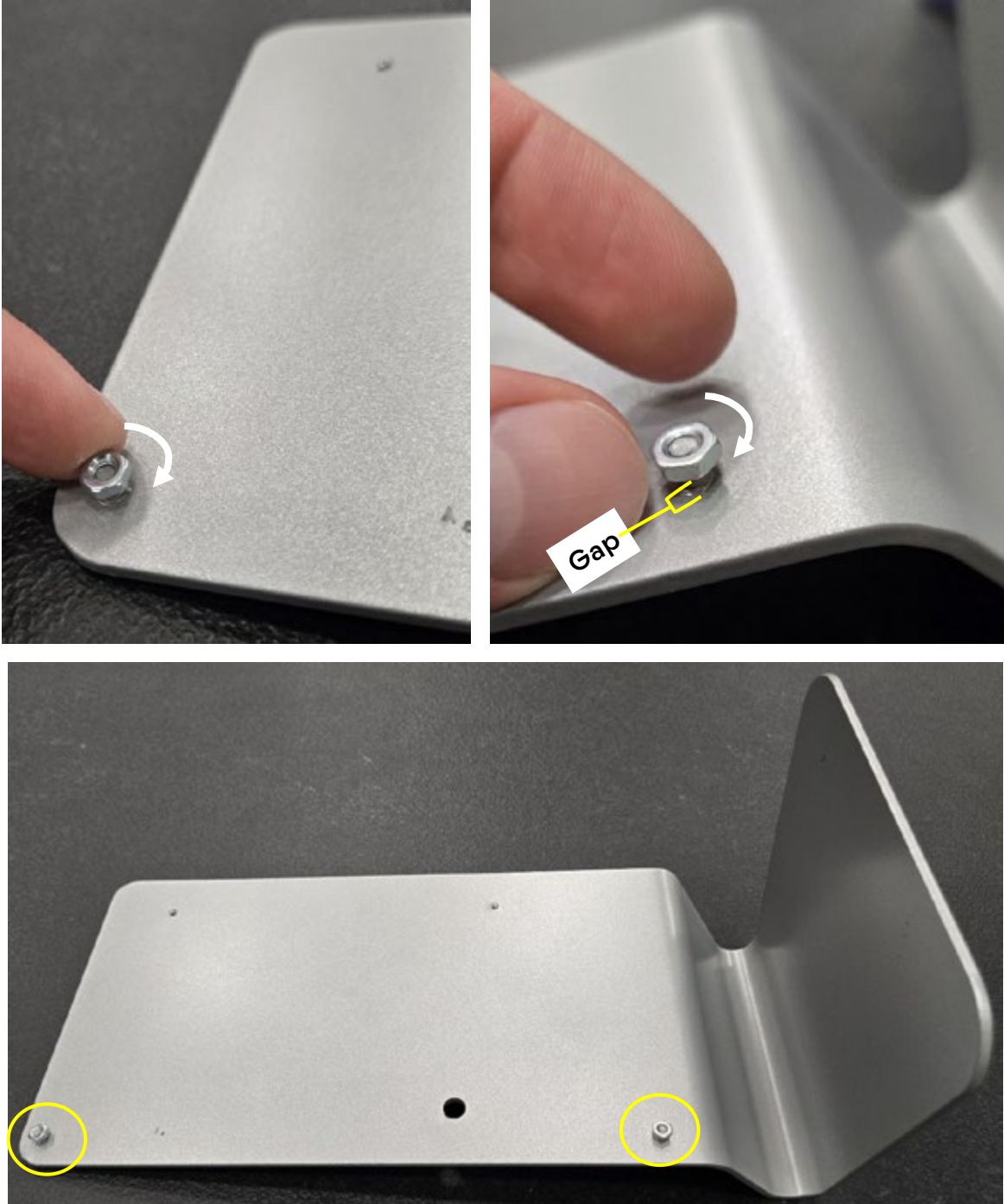


### TOOLS RECOMMENDED

- T10 Torx driver
- 3/8" Nut-driver
- 1/4" Nut-driver

## INSTRUCTIONS

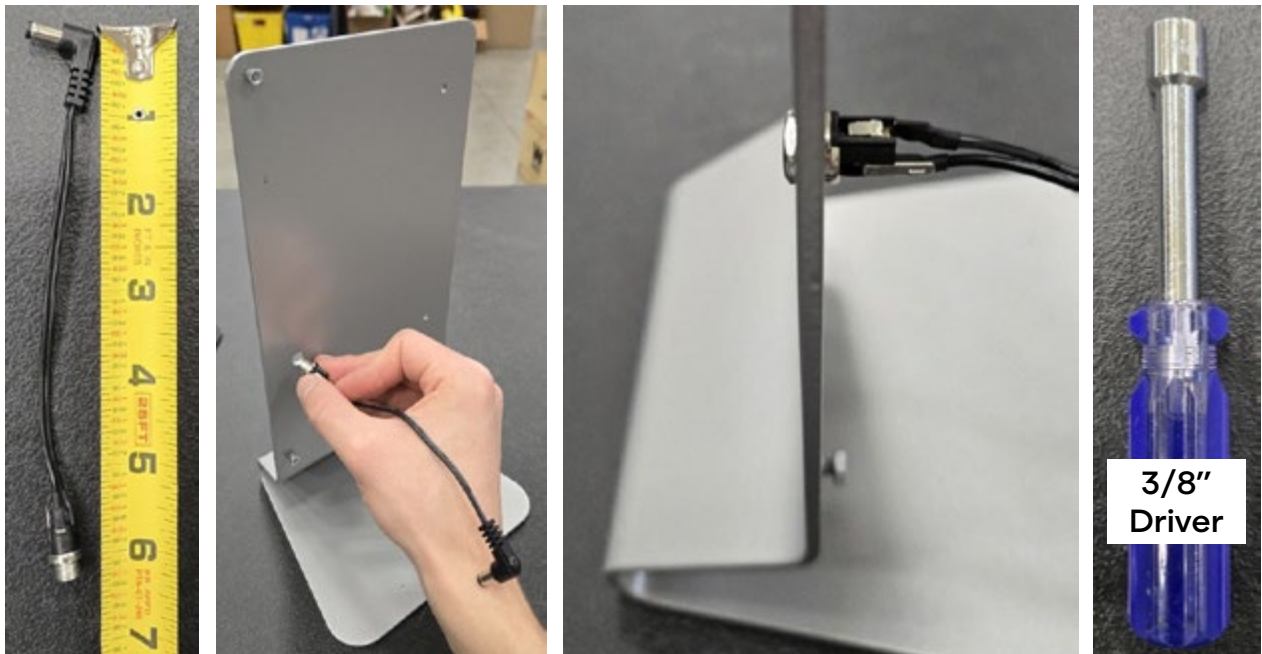
1. Attach nuts (2x) to threaded posts on the stand. Leave enough gap for appliance to hook in behind nuts.



2. Remove backing from adhesive side and apply stand pad to bottom of stand.



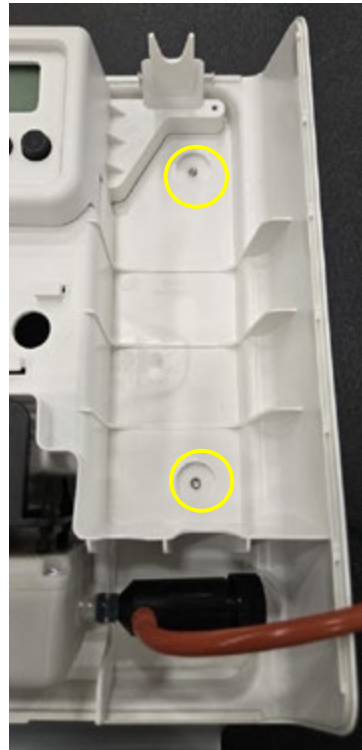
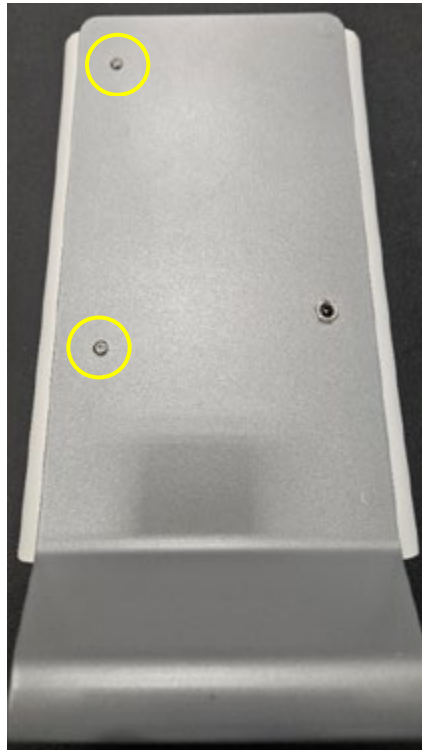
3. Install power extension cable, and tighten nut using 3/8" nut driver.



4. Plug the other end of the power extension cable into power port in the back of the appliance. Then affix the appliance to the stand: align the posts on the stand with the slotted holes in the appliance and slide down to lock in place.



5. Insert screws (2x) into holes in the back of the stand so that the screw heads are snug against stand and the threaded portion of the screws protrude out of the other side (T10 Torx driver recommended).



6. Thread nuts (2x) onto screws from step 5, tighten with 1/4" nut driver.

7. Remove backing from adhesive side and apply AQ290 Rating Label to back of stand.

